



# OMNI Series

AN EVERLAST™ EXCLUSIVE

**EACH GENERATION HAS IT BETTER THAN BEFORE**



## Quality Performance. Lifetime Warranty.

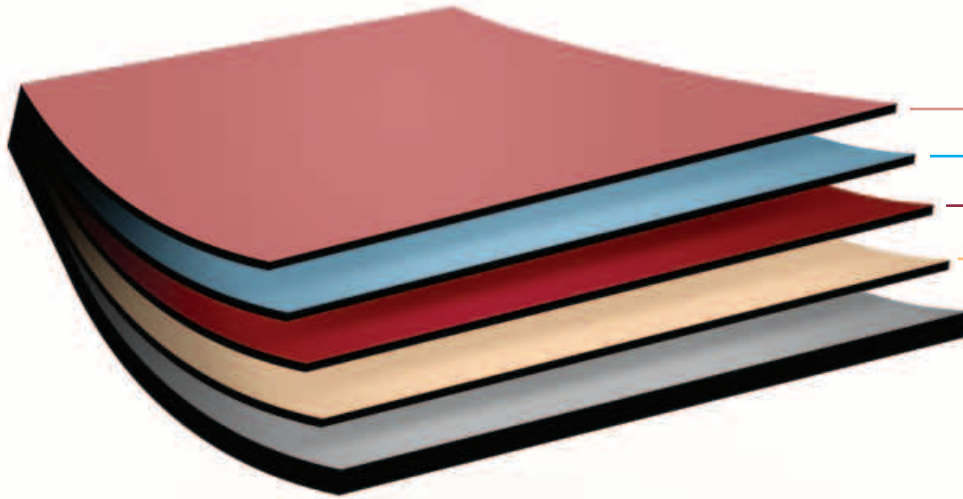
OMNI is the next generation—providing even better paint adhesion and unparalleled barrier protection to the already proven Everlast process. This generation of panels proves to be so invincible that—even though we offer it—

you may never get a chance to use OMNI's lifetime warranty. Benefit from the next step in Everlast's commitment to advancing metal roofing reliability and longevity with the highest quality components in the industry.

Here at Everlast™ our success is strongly attributed to our striving for ever-increased quality, service and dedication. Our quality can be seen throughout our panel, starting with the purchase of raw materials, proprietary heat-forming technology, and innovative processes through continuous product development and research.

**NOW, MORE  
THAN EVER,  
THE EVERLAST™  
NAME SAYS  
IT ALL.**

## AND THIS GENERATION IS NO DIFFERENT



### TOPCOAT

Everlast Synergy Paint System offers the highest quality siliconized polyester coating system the industry has to offer.

### OMNI ENHANCED PRIMER

In combination with our Synergy Paint System, the primer offers additional corrosion protection, superior resistance to moisture and UV rays plus excellent flexibility and abrasion resistance.

### CHROMATE PRE-TREATMENT

A complex oxide bonds the paint to the Galvalume substrate resulting in superior adhesion of the primer.

### GALVALUME COATING

Delivers the best protective characteristic features of aluminum and zinc.

### FULL HARD STEEL

.015 min. full hard high tensile steel with 95,000 psi min. yield.



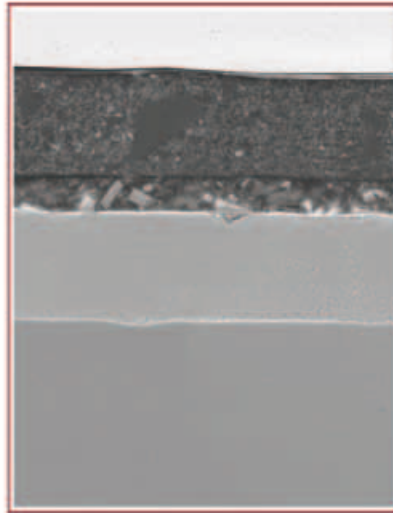
Cross section view of Everlast II® panel

## OMNI SERIES

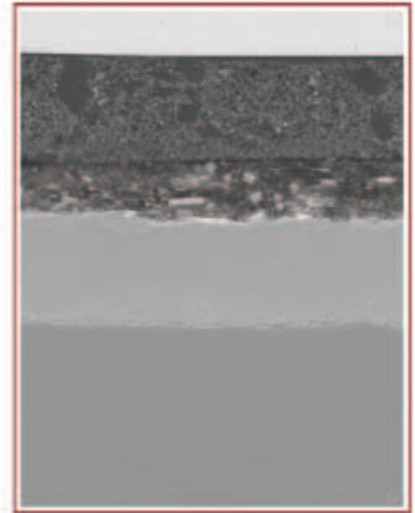
### 7 OMNI ENHANCED PRIMER

During the natural oxidation process, rust becomes the by-product of water's affect on bare metal. Research has shown that a quality primer provides significant barrier protection and increases the efficiency of paint adherence.

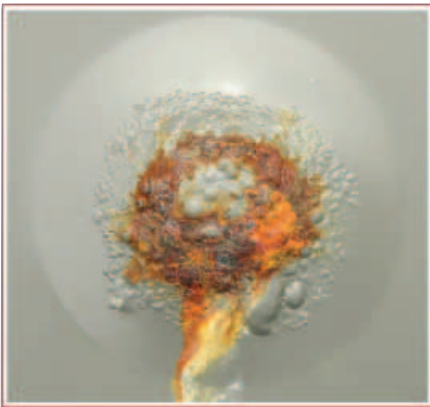
Everlast Roofing has once again raised the bar on product performance with the **OMNI Enhanced Primer**. Developed with the latest technology, the OMNI Enhanced Primer provides a thicker, more resistant raw material layer of defense against corrosion while promoting superior paint adherence and flexibility.



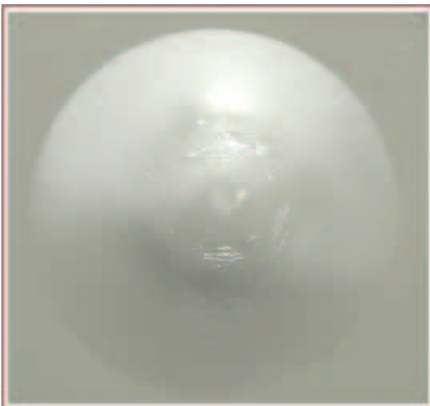
*Cross section of a competitor panel*



*Cross section of an Everlast II® OMNI panel*



*Overview of a competitor panel exposed to 1,500 hours of accelerated acid rain testing*



*Overview of an Everlast II® OMNI panel exposed to 1,500 hours of accelerated acid rain testing*

### PROVEN PROTECTION FROM THE PRODUCT WITH COHESIVE ELEMENTS

Effective barrier protection of steel against corrosive elements (such as the atmosphere and water) extends the life of the panel and preserves material investments. By combining the remarkable quality of Galvalume's corrosion protection with a corrosion inhibitor top coat system, the Everlast II® OMNI panel brings cohesive elements together to form a superior protection system.



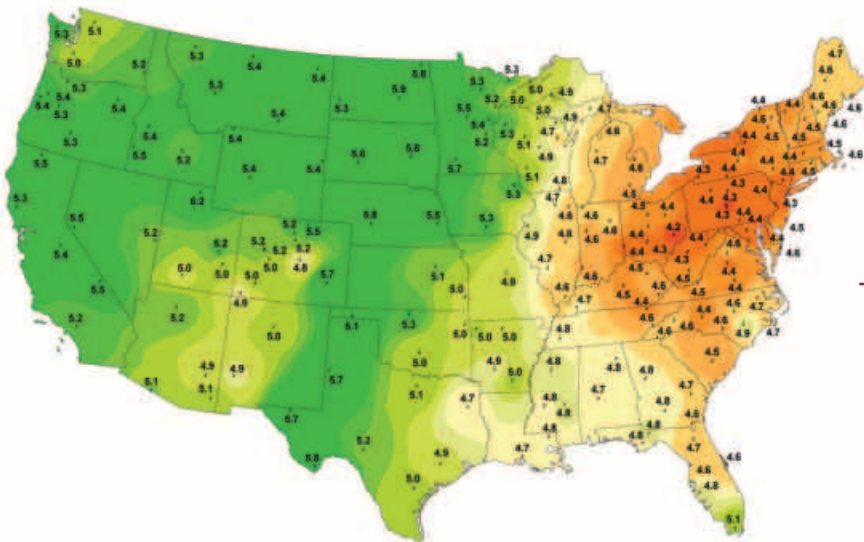
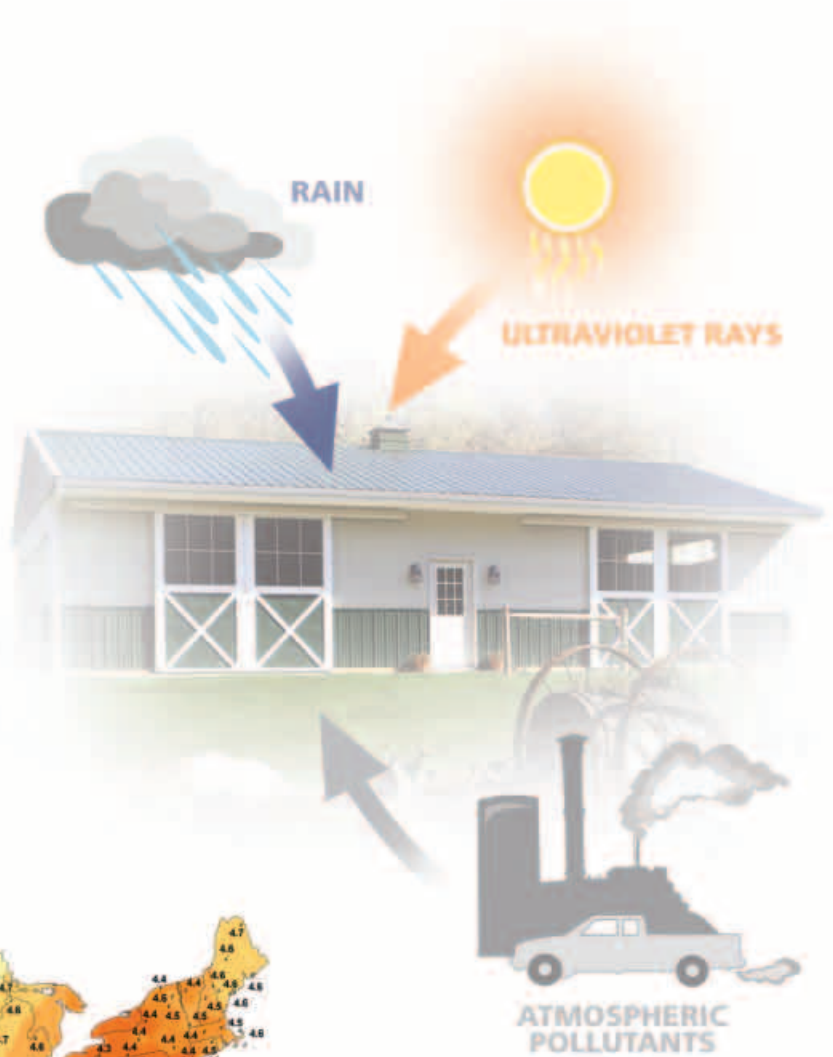


# TECHNOLOGY

## 2 SYNERGY PAINT SYSTEM

Customers rely on Everlast's in-depth analysis of product performance which will reflect on the longevity and esthetic values of their construction projects. Research on the Synergy Paint System is based on real outdoor exposure utilizing all weather elements in Southern Florida. These "real world" results — not simply accelerated laboratory tests—have shown that the Synergy Paint System delivers the strongest SMP system in the industry. Through the toughest tests of nature and time, it has proven to provide...

- Improved chalk resistance
- Improved fade resistance
- Improved gloss retention
- Excellent color durability
- Good resistance to atmospheric staining and dirt residue



### Lab pH

≥ 5.3	4.9 - 5.0	4.5 - 4.6
5.2 - 5.3	4.8 - 4.9	4.4 - 4.5
5.1 - 5.2	4.7 - 4.8	4.3 - 4.4
5.0 - 5.1	4.6 - 4.7	< 4.3

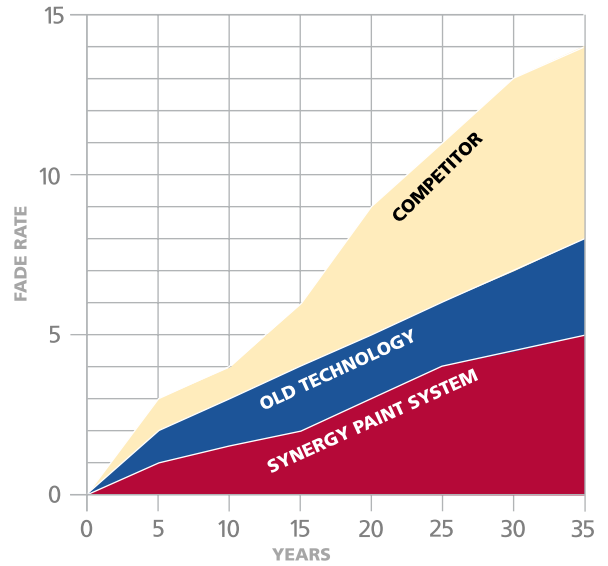
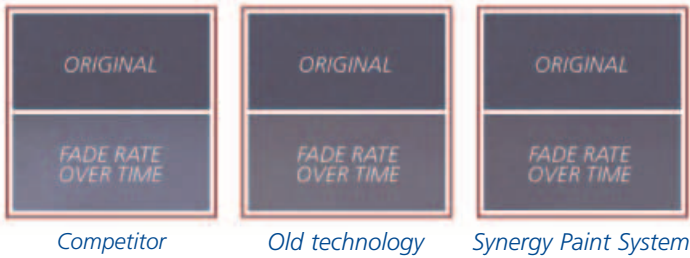
UV rays, acid rain, atmospheric pollutants and other environmental conditions often cause a panel to fade and chalk. The Synergy Paint System utilizes a superstrong siliconized polyester resin proven to reduce the effects of elements and influences which can degrade coatings.

# THAT IS TOUGHER

## SUPERIOR FADE RESISTANCE

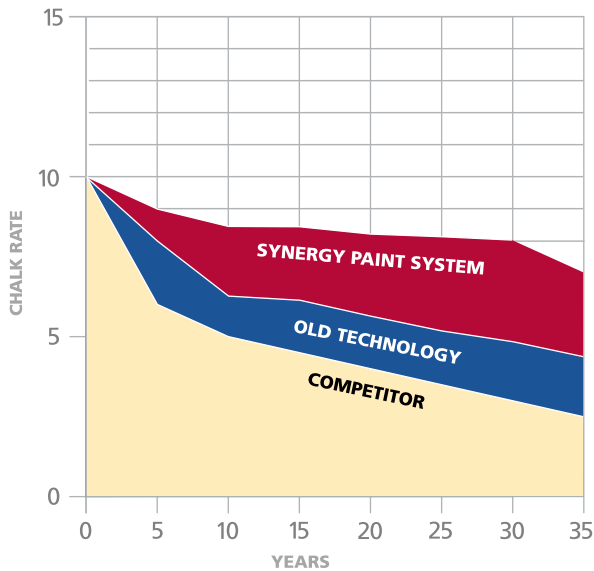
LOWER IS BETTER

A gradual change in the panel's paint color or gloss is known as fading. Fading occurs when there is a breakdown in the pigment caused by direct panel exposure to the sun's UV rays.



### FADE RATE: LOWER IS BETTER

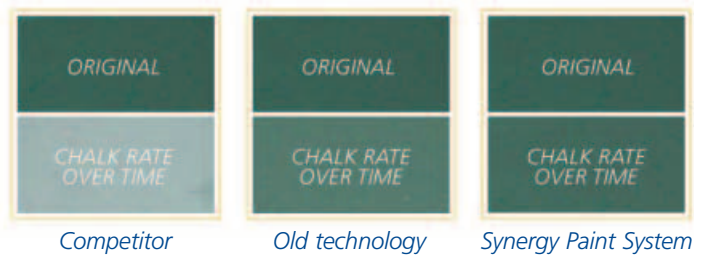
	0	5	10	15	20	25	30	35	YEARS
SYNERGY PAINT SYSTEM	0	1	1.5	2	3	4	4.5	5	
OLD TECHNOLOGY	0	2	3	4	5	6	7	8	
COMPETITOR	0	3	4	6	9	11	13	14	



## SUPERIOR CHALK RATE

HIGHER IS BETTER

A white powdery residue or appearance on the surface of the panel is evidence of chalking. Chalking is a direct result of a breakdown in the resin that is, most often, the result of environmental weathering.



### CHALK RATE: HIGHER IS BETTER

	0	5	10	15	20	25	30	35	YEARS
SYNERGY PAINT SYSTEM	10	9	8.5	8.5	8.2	8.1	8	7	
OLD TECHNOLOGY	10	8	6.2	6.1	5.7	5.1	4.9	4.3	
COMPETITOR	10	6	5	4.5	4	3.5	3	2.5	

# PERFORMANCE

## 3

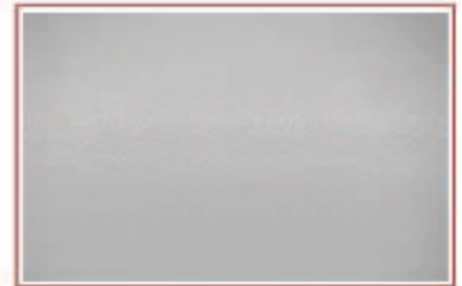
### HEAT FORMING™

#### EVERLAST II® OMNI HEAT FORMED™ PANEL MAJOR RIB vs. TYPICAL ROLL FORMED MAJOR RIB

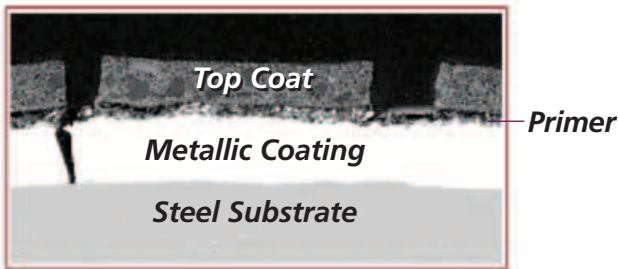
Cracks in the paint allow moisture—is often contaminated by atmospheric pollutants—to penetrate the protective surface of the coating causing the substrate to rust or corrode. In fact, fractures in the paint can cause a painted panel to corrode at a *faster rate* than an unpainted panel. At each point where the paint film has been opened, electrochemical cells invade to promote greater and faster corrosive attack. The result is accelerated corrosion in these areas because of the tendency to remain wet longer.



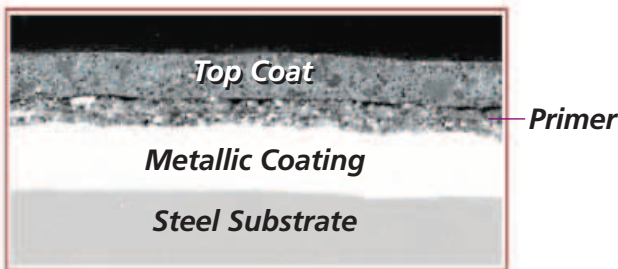
Overview of competitor panel magnified 30x



Overview of Everlast II® OMNI Heat Formed™ panel magnified 30x



Cross section of a competitor panel at 250x

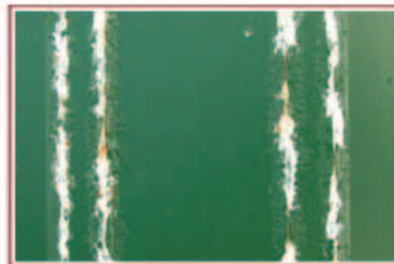


Cross section of an Everlast II® OMNI panel Roll Formed at 183° 250x



Photo micrographs taken from this area on the panel

The photos above show how Everlast II's® OMNI Heat Formed™ panel outlasts the competitor's panel. The Heat Formed™ panel creates a paint system that is more flexible and therefore better able to withstand the rigors of the forming process. Paint coverage is not compromised and the result is outstanding barrier protection. This barrier protection prevents corrosion by isolating the steel from the environment.



Overview of a competitor panel exposed to 1,500 hours of accelerated acid rain testing



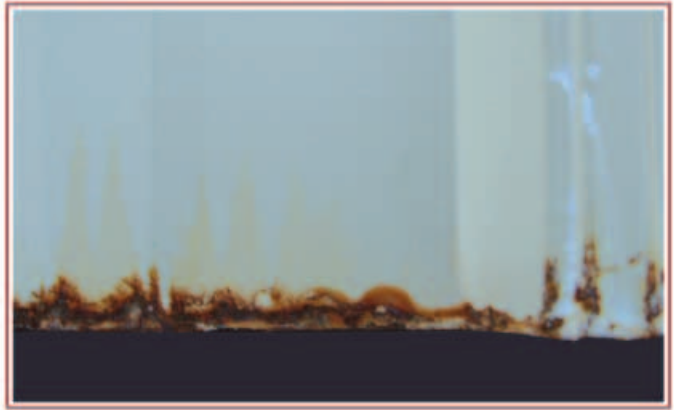
Overview of an Everlast II® OMNI panel exposed to 1,500 hours of accelerated acid rain testing

## TO LAST A LIFETIME

### 4 **CECI™** CECI™ IS A CLEAR CORROSION INHIBITOR

Everlast's CECI™ (Cut-Edge Corrosion Inhibitor) effectively decreases the corrosion rate of the factory cut edge. This application is applied to the factory cut edge of all Everlast II's® OMNI Panels. Because the corrosion inhibitor applied is a clear product, end-users will see virtually no sign of CECI™ as it quietly protects and effectively decreases corrosion rates, as proven through industry research. The goal at Everlast Roofing is to incorporate cut-edge technological advances to our products, ensuring the highest standard of quality. CECI™ is another step in Everlast's commitment to bringing the metal marketplace the finest materials in quality building components.

**CECI™ effectively decreases the corrosion rate of factory cut edge**



*Overview of a competitor panel exposed to 48 weeks of salt spray testing at 45° South Florida*



*Overview of an Everlast II® panel without CECI™ exposed to 48 weeks of salt spray testing at 45° South Florida*



*Overview of an Everlast II® panel with CECI™ exposed to 48 weeks of salt spray testing at 45° South Florida*





# OMNI Series Limited Lifetime Warranty

Everlast Roofing, Inc. warrants to the original buyer, in the continental United States that under normal atmospheric conditions (which term excludes aggressive atmospheres such as those contaminated with chemical fumes or salt spray) the exterior paint on its prepainted Everlast II® and Everdrain® OMNI Series product will meet the following specifications:

**Film Integrity:** Will not crack, check, blister or flake for the life of the panel.

**Chalk Rating:** Will not chalk in excess of a numerical rating of 7 when measured with the standard procedure specified in ASTM D4214-89, on sidewalls for a period of thirty-five (35) years and one month.

Will not chalk in excess of a numerical rating of 5 when measured with the standard procedure specified in ASTM D4214-89, on roofs for a period of thirty-five (35) years and one month.

**Fade Rating:** Will not fade or change color by more than 5 units of color when measured with the standard procedure of ASTM D-2244, on sidewalls for a period of thirty-five (35) years and one month.

Will not fade or change color by more than 7 units of color when measured with the standard procedure of ASTM D-2244, on roofs for a period of thirty-five (35) years and one month.

## LIMITATIONS ON WARRANTY:

1. This Warranty is extended to the original buyer and is not transferable or assignable. This limited warranty shall only apply to the initial application of the product. Removal and reinstallation or reuse of the product shall void this limited warranty.
2. Seller's Warranties apply only to panels which have been exposed to normal weather and atmospheric conditions and does not apply to defects or failures caused by acts of God, falling objects, misuse, improper assembly, improper storage, external forces, explosions, fire, vandalism, deliberate destruction or damage, riots, civil commotions, acts of war, radiation or harmful gases or fumes, excessive salt atmospheres, chemicals, and foreign substances (i.e., abnormal quantities of sand or dirt particles) in the air or atmosphere, and regardless of roof or pitch, installation must provide for proper drainage so as not to hold any water. This limited warranty shall be void and not apply to products stored or used within 1100 yards of a salt water environment.
3. This Warranty does not cover failures resulting from edge corrosion.
4. All time frames herein shall be calculated from the date buyer takes possession of the product.

## BUYERS OBLIGATIONS:

1. Buyer must have paid for the product in full.
2. Buyer must inspect material received from Seller prior to installation as to mitigate expense involved in repairing, repainting or replacing defective sheets.
3. Any claim on account of a defect in the product or for any other cause whatsoever shall be deemed WAIVED by Buyer unless written notice thereof is given to seller within 30 days after discovery of the defects and within the applicable warranty period. Seller shall be given reasonable opportunity to investigate all claims and no products shall be returned to Seller without Seller's inspection, approval and receipt by buyer of written shipping instructions from Seller. All transportation and shipping costs to Seller shall be the responsibility of buyer.
4. To be effective, Buyer's notice shall include such records as may enable Seller to establish the Everlast order number, Everlast invoice number, date of shipment by Everlast, and the date of installation in the form of siding or roofing panels of the claimed defective sheet. These records must be duly authenticated, be made in the ordinary course of business, and be contemporaneous with the events noted therein. Buyer shall also present such evidence that establishes that any claimed defect was due to a breach of the warranty stated herein.
5. All obligations of and conditions imposed on buyer under the limited warranty shall be deemed material terms of this limited warranty and any violation of failure to comply by buyer shall relieve Seller from all obligations hereunder.

## LIMITATION OF LIABILITY:

1. If during the first 45 years after buyers receipt of the product, any of Seller's products fail to perform as warranted, the company will, at its option, repaint or replace the defective panels or refund the buyer the price paid for the material. Seller's total liability is expressly limited to the purchase price of the defective material. Except as provided herein Seller shall not be liable for any losses, damage or expense, whether direct, incidental or consequential, caused by or resulting from the use of defective or non-conforming products.
2. After the expiration of 45 years after buyers receipt of the product, if Seller determines that the film integrity of the product failed to perform as warranted herein and that the Buyer has complied to obligations hereunder, Seller will, at its sole option, repaint the existing product by any method selected by Seller; supply a replacement product or refund the buyer a percentage of the purchase price identified in the table below. After the expiration of 45 years after buyers receipt of the product. Sellers maximum liability under the limited warranty regarding film integrity shall be limited to a percentage of the purchase price of the non-conforming product only in accordance with the following schedule:

<i>Claim submitted during the year following receipt of the Product</i>	<i>Maximum liability of Seller, expressed as a percentage of Purchase Price</i>
46th - 48th	90%
49th - 50th	70%
51st - 52nd	50%
53rd - 54th	30%
55th and thereafter	10%

3. Except for providing repairs, replacement products or refunds in accordance with the paragraph above and as limited by the other terms and conditions of the Limited Warranty, Seller shall not be liable for any other expenses, claims or damages of any kind, including (without limitation) any labor or other installation or product replacement cost and/or any direct, indirect, consequential, incidental or special damages.

## EXCLUSIVE OF WARRANTIES:

1. THE EXPRESS WARRANTIES AND REMEDIES STATED HEREIN ARE THE EXCLUSIVE WARRANTIES AND REMEDIES APPLICABLE TO THE PRODUCTS. ALL IMPLIED WARRANTIES, INCLUDING ANY IMPLIED WARRANTY OF MERCHANT ABILITY OR FITNESS FOR A PARTICULAR PURPOSE, ARE EXPRESSLY EXCLUDED.



### Mid-Atlantic

239 N 5th Avenue  
Lebanon, PA 17046  
Phone: 717.270.6554  
Fax: 717.270.6569  
Toll Free: 888.339.0059

### New England

24 JR Mains Drive  
Bridgton, ME 04009-0278  
Phone: 207.647.5500  
Fax: 207.647.5599  
Toll Free: 888.339.0059

### Midwest

7180 N 050 E  
Howe, IN 46746  
Phone: 260.562.3782  
Fax: 260.562.3738  
Toll Free: 866.562.3782